

Radisson

MINING RESOURCES

**Growing & Advancing One of
Quebec's Highest-Grade
Undeveloped Gold Projects**

**October 30, 2024
TSXV:RDS OTCQB:RMRDF**



CAUTIONARY STATEMENT REGARDING FORWARD-LOOKING INFORMATION

Except for historical information certain statements included in this presentation are forward-looking statements within the meaning of Canadian securities laws. Such statements may include words such as “Anticipates”, “schedule”, “projects”, “plans”, “targets”, “programs”, “continues”, “estimates”, “could”, “should”, “would” or “will”. Forward-looking statements made in this presentation involve significant risks and uncertainties. These risks and uncertainties include the inherent risks involved in the exploration and development of mineral properties. The uncertainties involved in interpreting drilling results and other geological data. fluctuating metal prices. The possibility of project cost overruns or unanticipated costs and expenses. uncertainties relating to the availability and costs of financing needed in the future. and other factors. The Corporation disclaims any intention or obligation to update forward-looking statements if circumstances or management’s estimates or opinions should change. The reader is cautioned not to place undue reliance on forward-looking statements.

All references to currency made in this presentation are in Canadian dollars unless otherwise stated.

Richard Nieminen, P.Geo., Geological advisor acts as a Qualified Person as defined in National Instrument 43-101 and has reviewed and approved the technical information in this presentation. Mr. Luke Evans P.Eng., ing (ON, QC) of SLR Consulting (Canada) Ltd. is the Qualified Person responsible for the preparation of the Mineral Resource Estimate for the O’Brien Project effective March 2, 2023.

Please see the NI 43-101 “Technical Report on the O’Brien Project, Northwestern Quebec, Canada” effective March 2, 2023, Radisson’s Annual Information Form for the year ended December 31, 2023 and other filings made with Canadian securities regulatory authorities available at www.sedar.com for further details and assumptions relating to the O’Brien Gold Project.



- Exploring the **Historic O'Brien Mine** in **Quebec's Abitibi**
- **c.1 Moz of High-Grade** Mineral Resources and **Growing**
- **35,000m** fully-funded drill program ongoing
- **Refreshed Board and Team** with successful **track record** of major mine development
- **September 9 2024: MOU** with **IAMGOLD** to assess O'Brien processing at **Doyon Mill** (Doyon-Westwood Complex)



O'Brien Mine historical production of 587,121 oz 1926 - 1957

1.2M tonnes at 15.25 Au g/t¹

1. Technical report on the O'Brien project, Northwestern Québec, Report for NI 43-101, SLR Consulting (Canada) Ltd., March 2, 2023

LEADERSHIP



Pierre Beaudoin Chairperson
30+ years of mining experience. Formerly COO (2018-2024) of SilverCrest Metals Inc. for Las Chipas Project. Formerly COO (2013-2017) of Detour Gold for Detour Lake Project. Barrick Gold, Lac Minerals Ltd. and Noranda Minerals



Lise Chenard Director
40+ years of mining experience. Previously with Campbell Chibougamau Mines, Lac Minerals and Barrick Gold. Held positions as Chief Geologist at Barrick Gold and Senior Director of Mining Geology & Senior Technical Advisor for IAMGOLD



Michael Gentile Director
20 years capital markets experience. Founding Partner and Senior PM at Bastion asset management. 20+ years as an active/successful mining investor



Peter MacPhail Director
35+ years of mining experience. Formerly COO (2015-2022) of Alamos Gold, Aurico and Northgate Minerals. Led development of Young Davidson mine, La Yaqui Grande mine in Mexico, and initial expansion of Island Gold mine



Jeff Swinoga Director
25+ years of mining experience. President, CEO & Director of Exploits Discovery Corp.. Previously National Mining and Metals Co-Leader at Ernst & Young Canada. Director, PDAC



Cindy Valence Director
20 years of experience in Senior management positions. Recently Executive VP and Chief Sustainability Officer at Sayona Mining Ltd. Women In Mining, Abitibi



Matt Manson President & CEO, Director
30+ years of mining experience. Led Marathon Gold's C\$500M Valentine Gold Project. Led Stornoway Diamond's C\$800M Renard Project. Northern Miner Mining Person of the Year 2017. PDAC Viola Macmillan Award 2015



Hubert Parent-Bouchard CFO
12 years accounting/finance/mining experience. Treasurer & Director, CIM Rouyn-Noranda branch.



Laird Brownlee VP Operations
Extensive operational expertise. Held senior level roles with Cliffs Natural Resources in Quebec (Labrador), Atlantic Gold and St. Barbra in Nova Scotia and Hudbay in Saskatchewan.



Dave Ross VP Exploration
25+ years experience in mineral resource estimation and exploration. Previously, VP Geology and Exploration Calibre and Marathon Gold. Senior Manager Resources Teranga. 15 Years with RPA (now SLR)

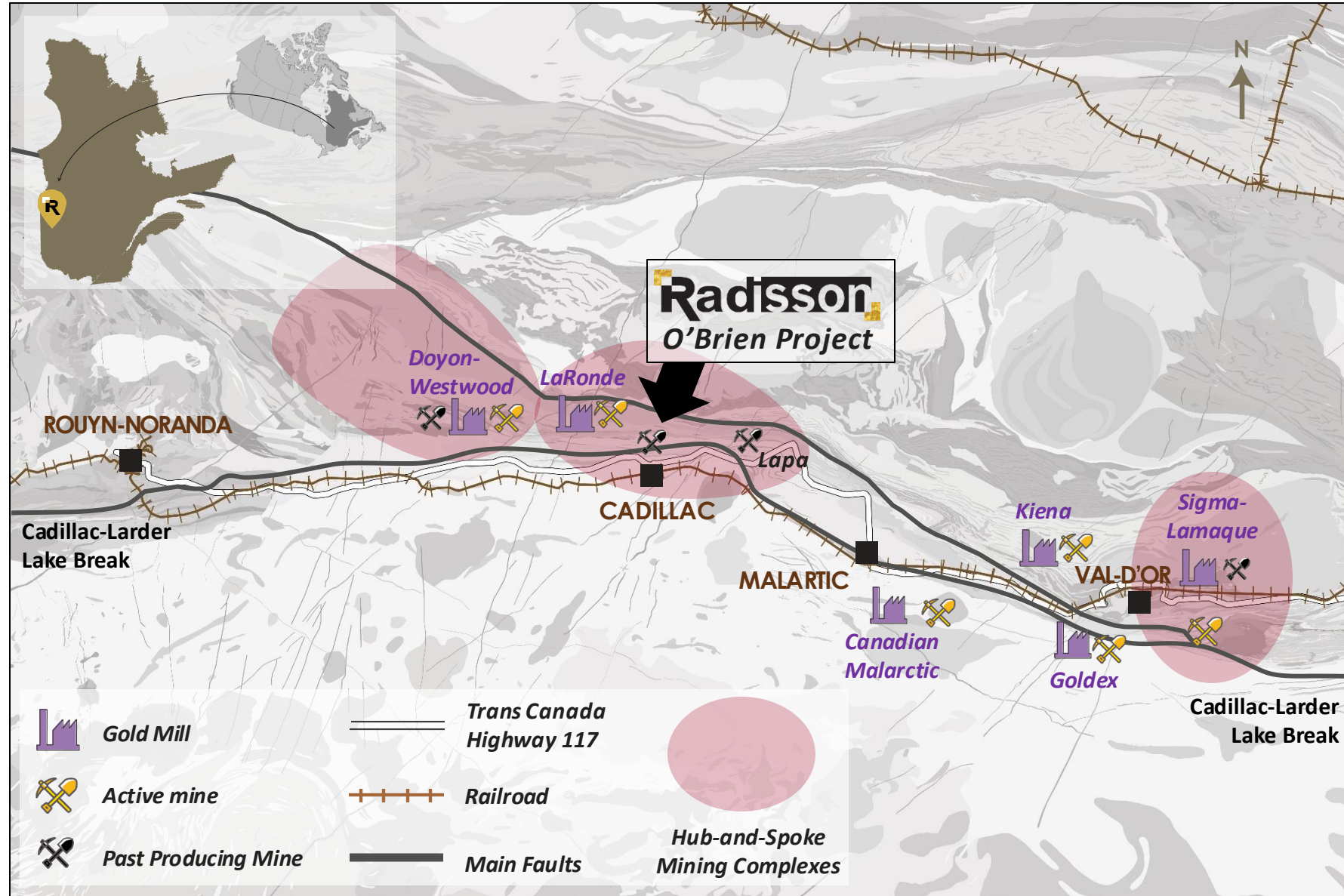


Kristina Pillon Manager, IR
14 years capital markets experience focused primarily in resources sector in investor relations, marketing and institutional equity sales. President & CEO of High Tide Consulting Corp.

*** New in 2024**

LOCATED IN THE WORLD'S MOST PROLIFIC GOLD BELT

- Located in the **Abitibi greenstone belt** hosting +100 million Au ounces between Ontario and Quebec in eastern Canada. One of the **largest and most prolific Neoproterozoic greenstone belts** in the world.
- The **O'Brien Gold Project** is located in the **25 Moz Cadillac-Bousquet Camp** on the **Larder-Lake-Cadillac Break**.
- Surrounded by current and former **World-class gold deposits**



Nearby Mines and Mills



LaRonde
Canadian Malartic
Goldex



Doyon-Westwood



Sigma-Lamaque



Kiena

O'BRIEN 21 KM FROM DOYON-WESTWOOD ON HIGHWAY 117



Doyon-Westwood Mine and Mill

Laronde Mine and Mill

Highway 117

Hydro-Electric Power

Old O'Brien Mill

Coreshack/Office

The Benefits of Location in a Mature Mining Camp

- Trans-Canada Highway 117
- Hydro-Electric Power
- Proximity to numerous under-capacity mills
- Access to high quality services and labour
- Existing Site Infrastructure

MOU WITH IAMGOLD ANNOUNCED SEPTEMBER 9, 2024

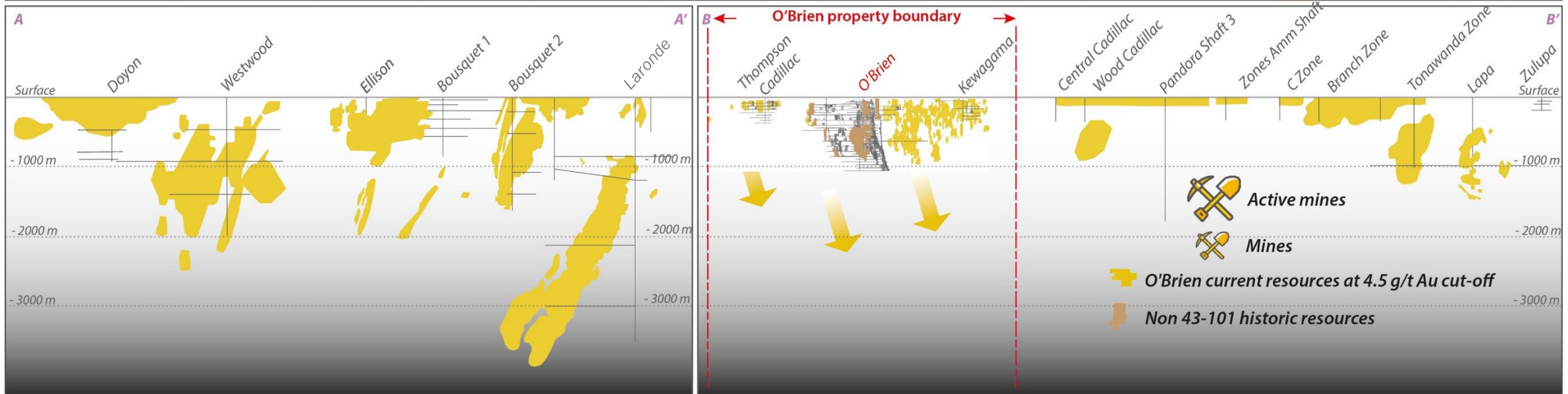
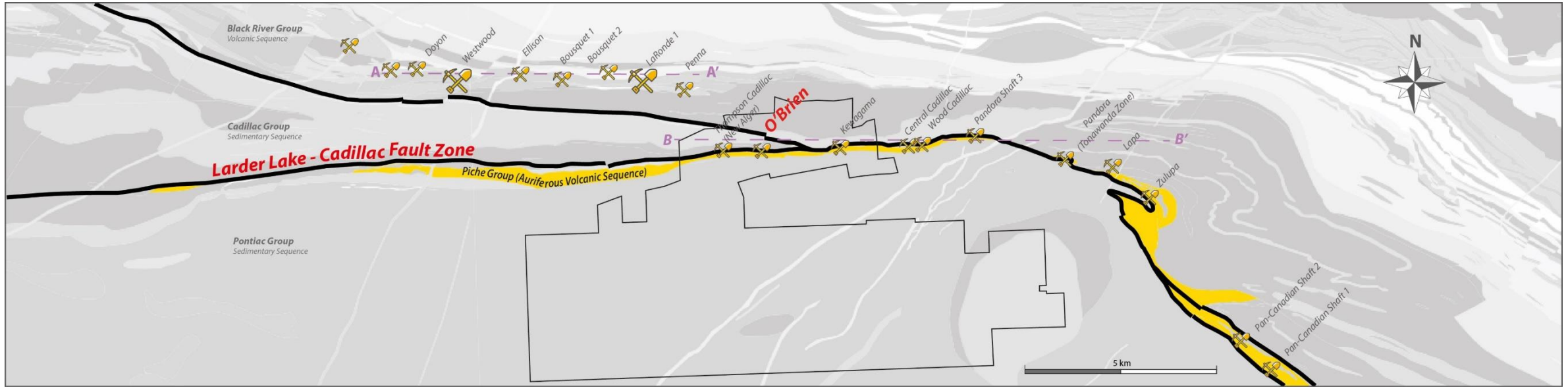
- MOU to facilitate **technical assessment** of viability of processing **O'Brien mined material at Doyon mill**
- Doyon is part of the **Doyon-Westwood mining complex** with capacity of **c.3,000tpd** (Westwood c.1,000tpd)
- If successful, Radisson will complete a **PEA** based on off-site processing at Doyon and a **c.1,000tpd underground mine** at O'Brien
- Non-binding, non-exclusive, and has no terms on future potential commercial arrangements between Radisson and IAMGOLD
- MOU consistent with Radisson's stated objective of exploring **hub-and-spoke mining for O'Brien**
- MOU consistent with IAMGOLD's stated objective of seeking opportunities for **additional feed for Doyon**



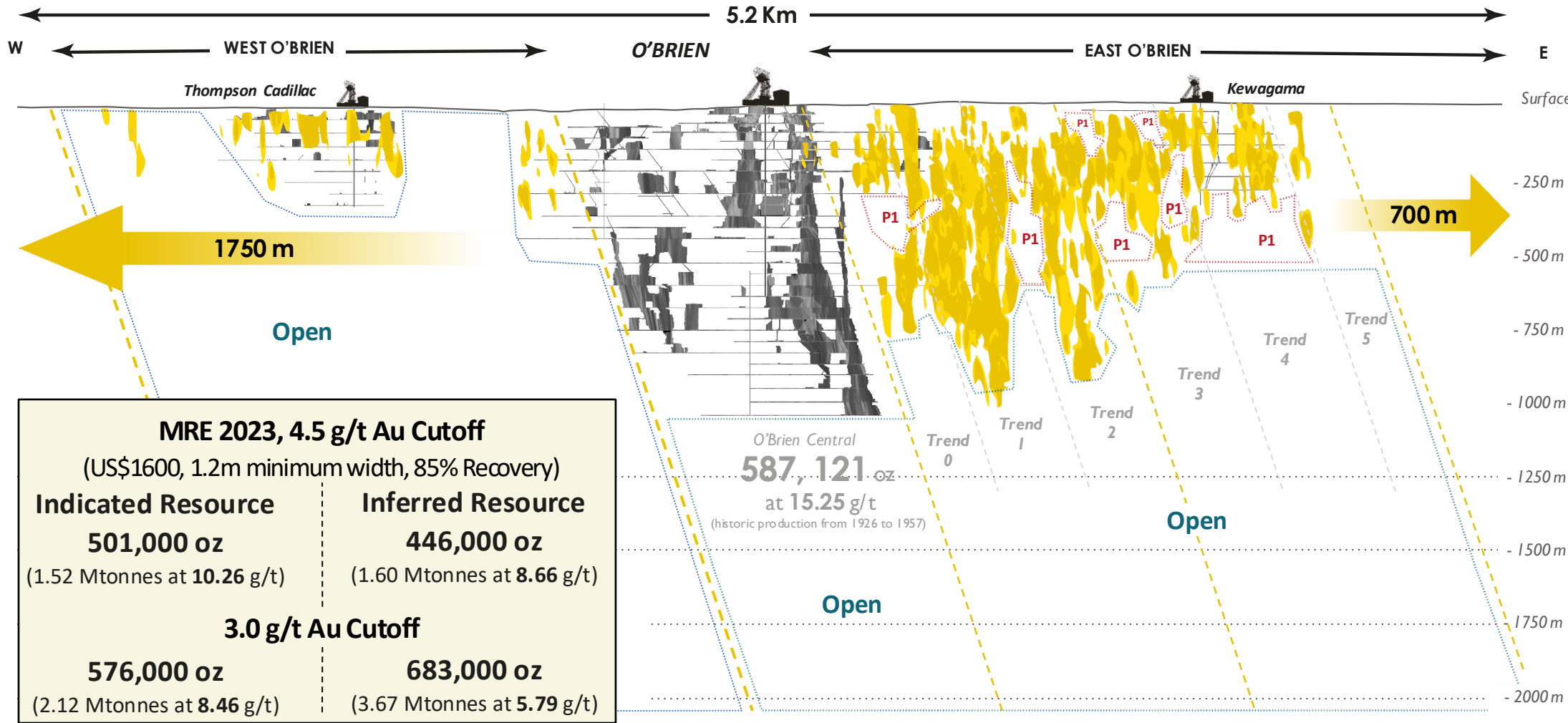
Doyon Mill, IAMGOLD Inc.



CADILLAC-BOUSQUET 25 MOZ GOLD MINING DISTRICT



O'BRIEN OPEN IN ALL DIRECTIONS



MRE 2023, 4.5 g/t Au Cutoff (US\$1600, 1.2m minimum width, 85% Recovery)	
Indicated Resource 501,000 oz (1.52 Mtonnes at 10.26 g/t)	Inferred Resource 446,000 oz (1.60 Mtonnes at 8.66 g/t)
3.0 g/t Au Cutoff	
576,000 oz (2.12 Mtonnes at 8.46 g/t)	683,000 oz (3.67 Mtonnes at 5.79 g/t)

2023 Mineral Resource Estimate

- Estimate extent (3.0 g/t cut-off)
- Estimate extent (4.5 g/t cut-off)
- Targets within Existing Vein Model (P1)
- Expansion Potential at Depth

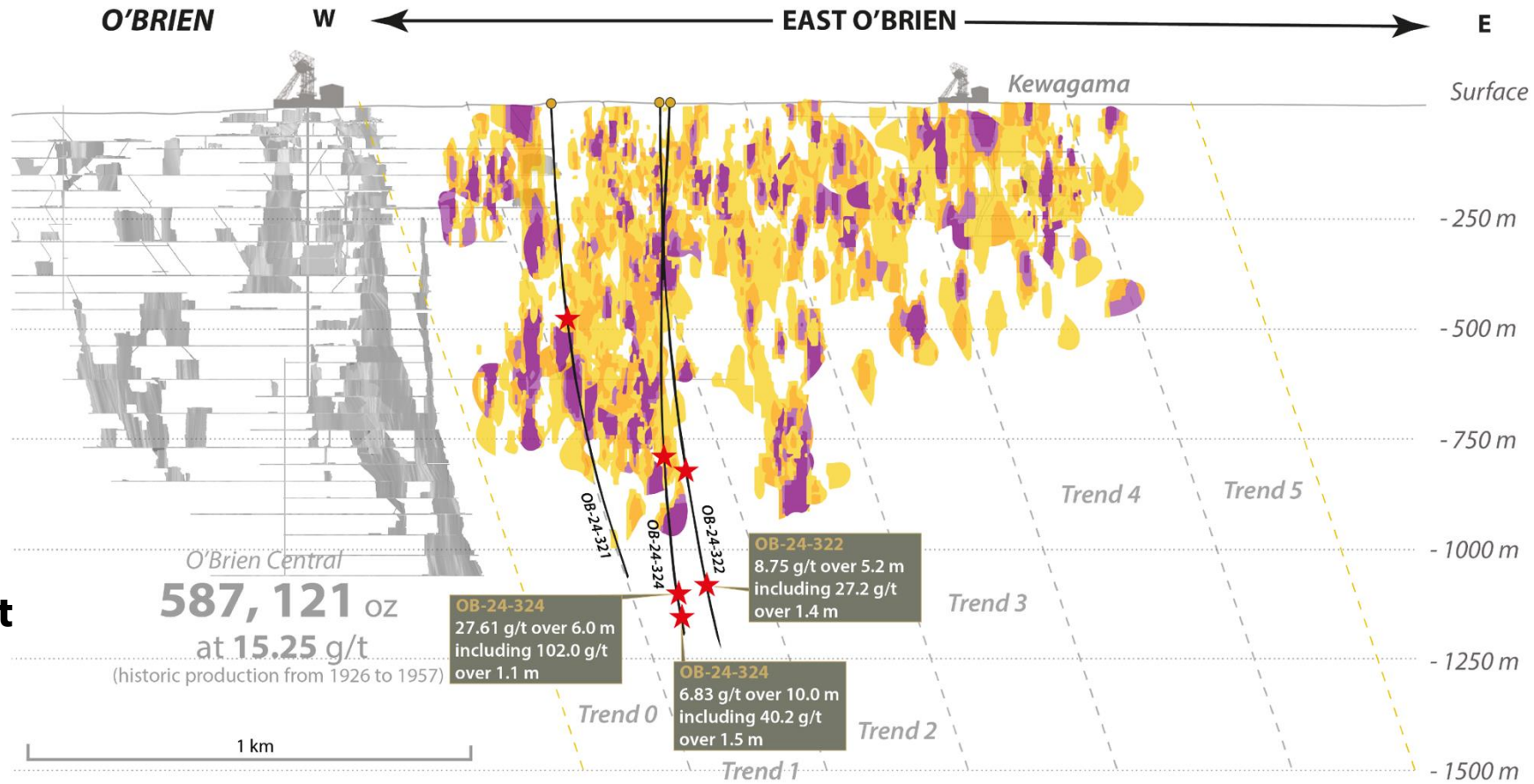
500m

Mineral Resources that are not Mineral Reserves do not have demonstrated economic viability. The estimate of mineral resources may be materially affected by environmental, permitting, legal, title, socio-political, marketing, or other relevant issues including risks set forth in Radisson's Annual Information Form for the year ended December 31, 2023 and other filings made with Canadian securities regulatory authorities and available at www.sedar.com.

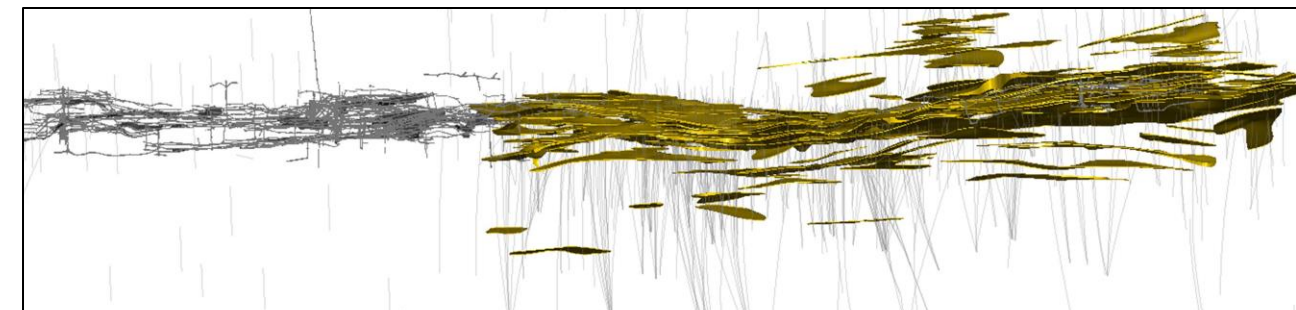
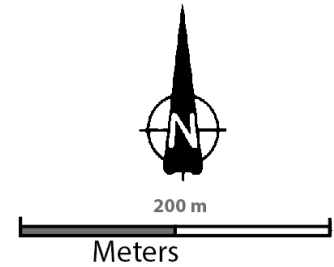
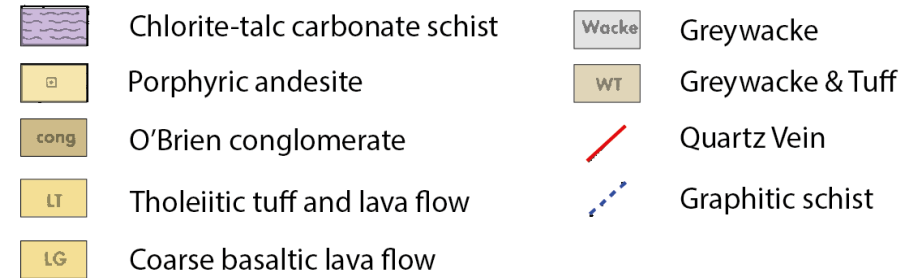
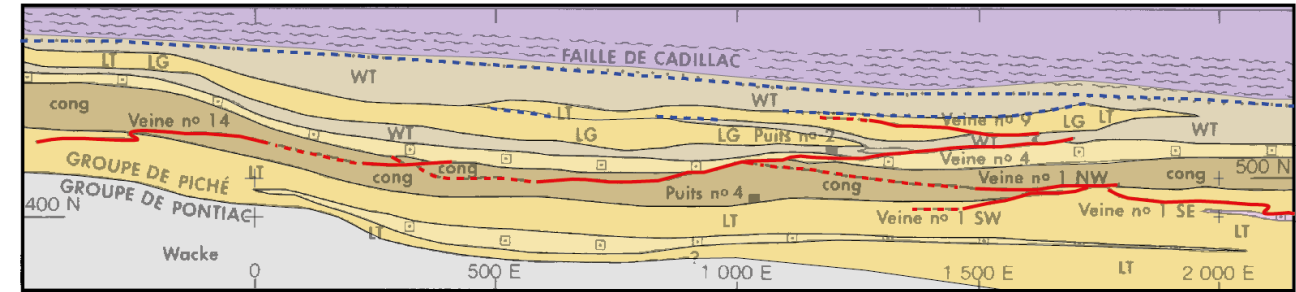
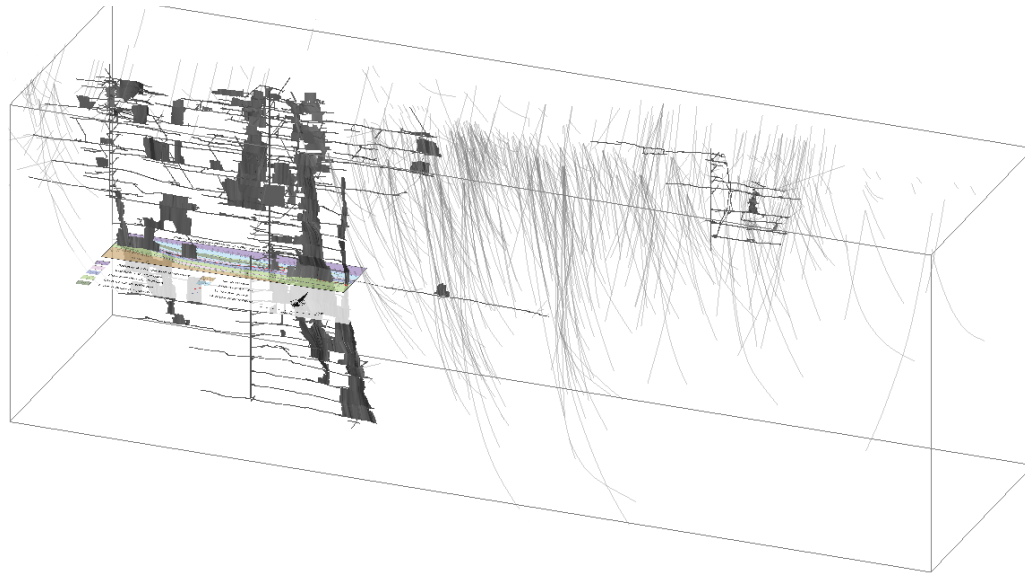
Refer to "Notes to the Mineral Resources" on slide "2023 O'Brien Mineral Resource Estimate"

SEPT 24 DRILL RESULTS: EXTENDING HIGH GRADE TO 1,100M DEPTH

- **35,000m Fully Funded** drill campaign ongoing
- **First 3 Deep Drill Holes** now completed
- **200m Wide Fence** down-plunge of high-grade Trend #1
- **OB-24-324 & 322 both hit** where predicted
- OB-24-234 returned **27.61 g/t Au over 6.0m** of core length at 1,100m deep **170m below previous drilling**
- For context, **75% of the existing Mineral Resource is at depths above 600m**



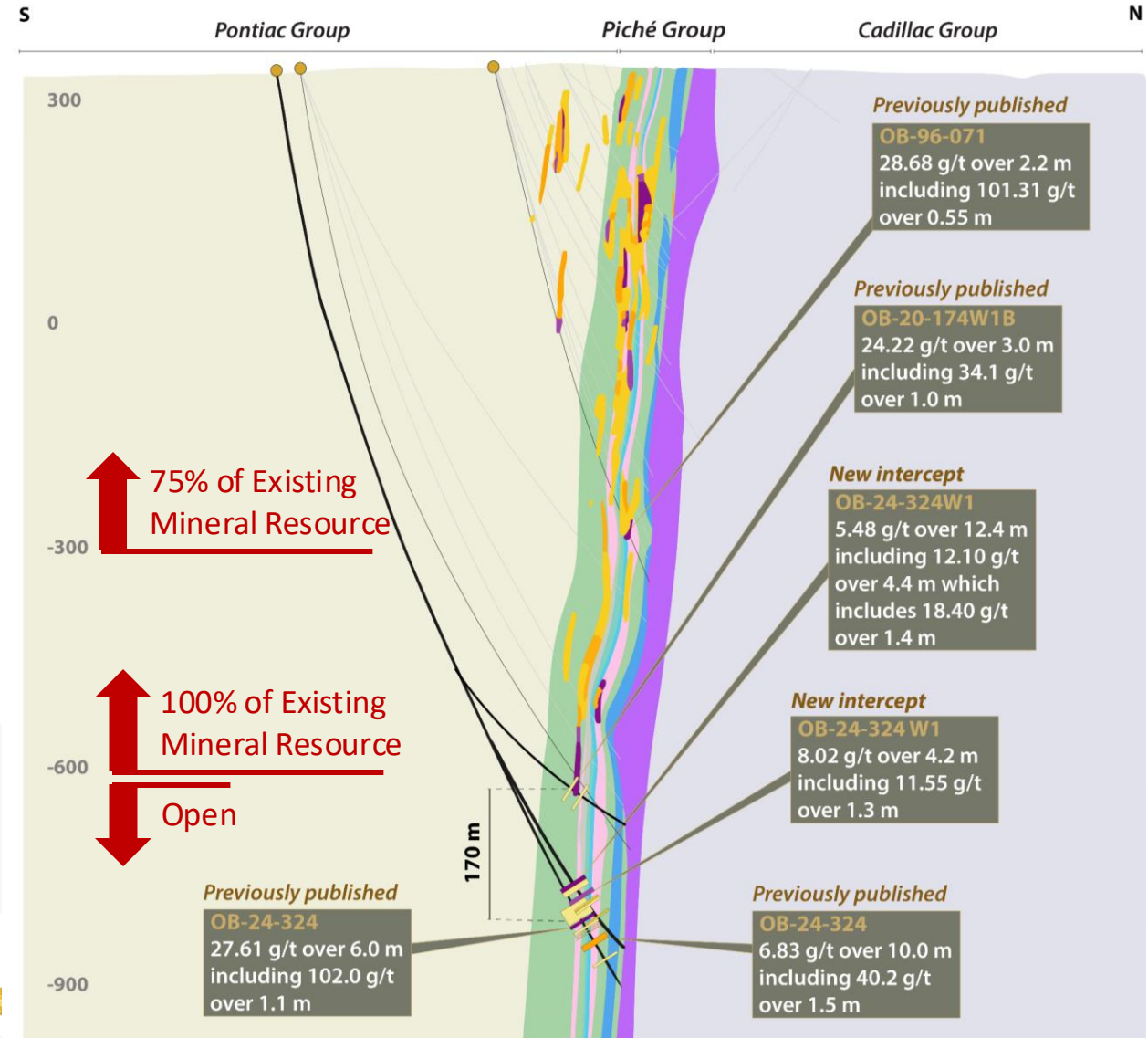
2023 Mineral Resource Estimate		Estimate extent (3.0 g/t cut-off)	35,000 m Drill Program	
Indicated Resource 501,000 oz at 10.26 g/t	Inferred Resource 449,000 oz at 8.64 g/t		Estimate extent (4.5 g/t cut-off)	Trace of completed DHH
		Estimate extent (7.5 g/t cut-off)	Historic DHH	
		Estimate extent (10 g/t cut-off)		



- Good understanding of vein morphology and continuity from mapping of **historic O'Brien workings**
- At large-scale the **veins are continuous**, sub-parallel to the stratigraphy and are developed within multiple units of the **Piche Group**.
- Vein Model with **134 Mineralized Zones** has been created
- The model **respects vein geometries and relationships** shown in the historically mined veins and has been used to **restrict the 2023 MRE**

SEPT 24 DRILL RESULTS: EXTENDING HIGH GRADE TO 1,100M DEPTH

- Recent drilling is also demonstrating the **continuity of mineralization and grade** to depth
- This was predicted by the **steeply plunging ore-shoots** of the historic O'Brien mine
- The latest drilling is now **below the current Mineral Resource** and **below the level of historic workings in the original mine**
- For context, **75% of the existing Mineral Resource is at depths above 600m**



2023 Mineral Resource Estimate

- Estimate extent (3.0 g/t cut-off)
- Estimate extent (4.5 g/t cut-off)
- Estimate extent (7.5 g/t cut-off)
- Estimate extent (10 g/t cut-off)

Assay g/t



Piché Group

- Basalt
- QFP dike
- Conglomerate
- Greywacke and argillite
- Ultramafic unit

Cadillac Group

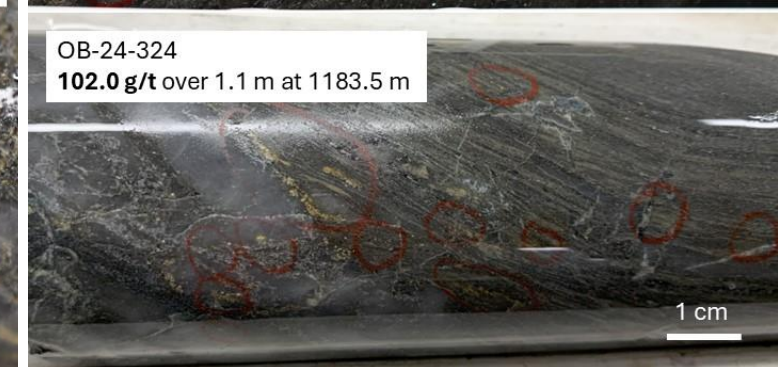
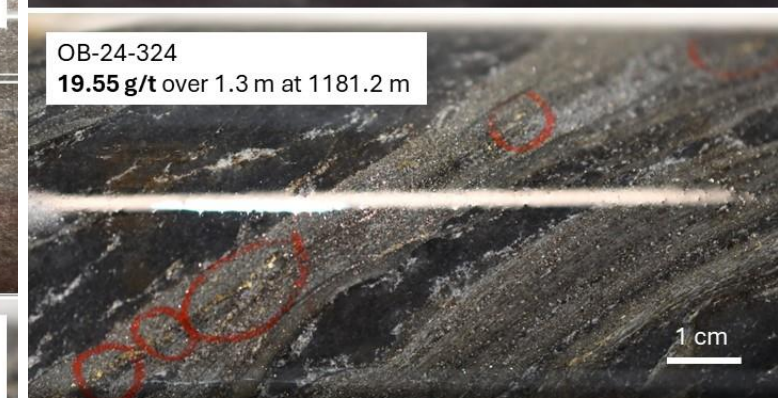
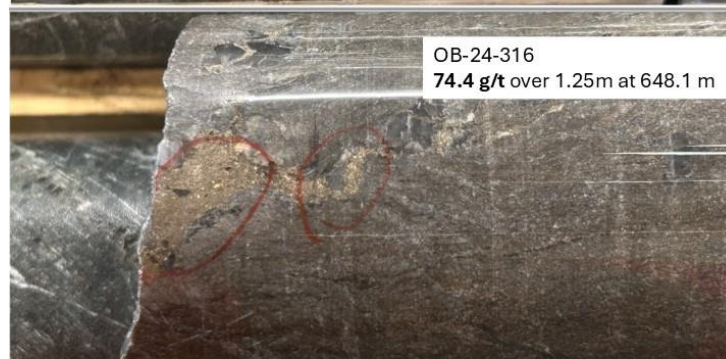
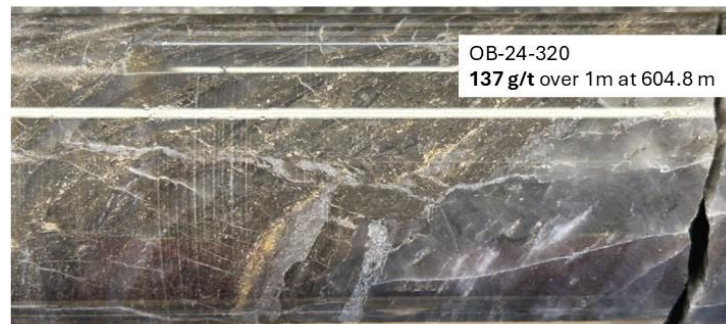
- Greywacke and argillite

Pontiac Group

- Greywacke and argillite

VISIBLE GOLD AS A CHARACTERISTIC OF THE O'BRIEN PROJECT

- O'Brien high-grade intersections are characterized by **abundant VG**
- Pattern of **very high grade, narrow intercepts** within **broader altered and mineralized envelopes**
- August 14, 2024 results:
 - **OB-24-320** with **24.74 g/t Au over 6.0m** including 137.00 g/t Au over 1.0m
 - **OB-24-316** with **42.31 g/t Au over 2.3m** including 74.40 g/t Au over 1.3m
- September 24, 2024 results:
 - **OB-24-324** with **27.6 g/t Au over 6.0m** including 102.0 g/t Au over 1.0m, and...
 - **OB-24-322** with **8.75 g/t Au over 5.2m** including 27.20 g/t Au over 1.4m
- October 30, 2024 results:
 - **OB-24-332** with **16.21 g/t Au over 5.4m** including 32.25 g/t Au over 2.4m
 - **OB-24-334W1** with **5.48 g/t Au over 12.4m** including 12.10 g/t Au over 4.4m



Visible gold encountered in holes OB-24-316-324. See August 14, 2024 and September 24, 2024 press releases

Regular Exploration Drilling News-Flow

- **3 drill rigs** onsite
- Ongoing **35,000 m** of drill program
- Targeting resource expansion and step-out/exploration, including **deep drilling below high-grade trends**

Thinking Ahead to Development

- **Technical assessment** of processing viability at **Doyon with IamGold**: Metallurgy, Flow Sheet, Tailings Strategy
- If successful, **PEA for an underground mine** at O'Brien mine with off-site processing
- Ongoing **environmental studies**, developing **permitting** timelines, **community engagement**



CAPITALIZATION AND BALANCE SHEET

\$95.8 Million

Market Capitalization

As of October 29, 2024

\$10.7 Million

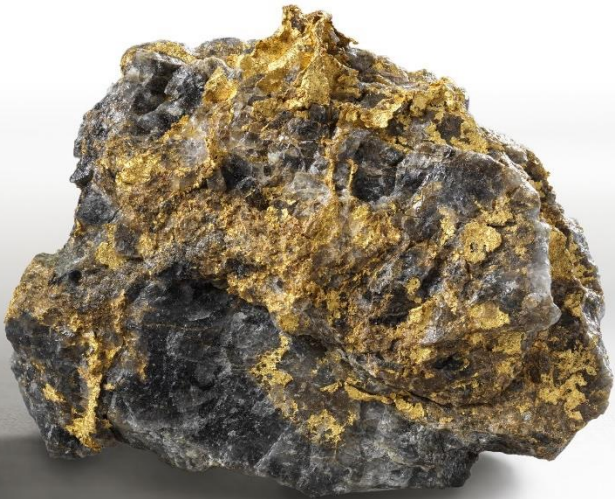
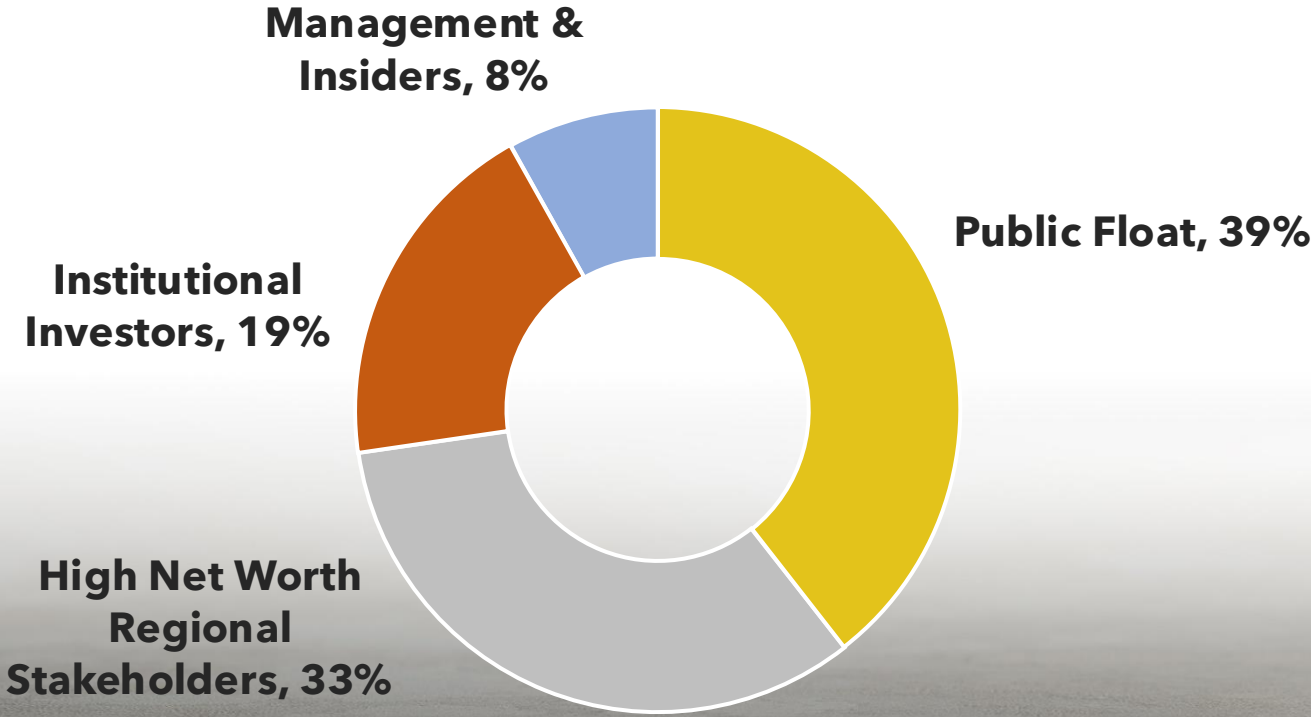
Cash Position

Unaudited, estimated as of October 29, 2024

342.2 Million

Shares Outstanding

Estimated as of October 29, 2024



TSXV:RDS
OTCQB:RMRDF

*Ownership percentages rounded for simplicity and may not add up to 100%.

Radisson

MINING RESOURCES

Appendix Materials

TSXV:RDS OTCQB:RMRDF



2023 O'BRIEN MINERAL RESOURCE ESTIMATE

Cut-off Grade	Indicated Mineral Resources			
	O'Brien Deposit	Tonnage	Grade	Metal
	Resource date	(t)	(g/t Au)	(oz Au)
4.5 g/t Au	July 2019	1,115,000	8.85	318,000
	March 2023	1,517,000	10.26	501,000
	Increase	+402,000	+1.41	+183,000
		+36%	+16%	+58%

Inferred Mineral Resources		
Tonnage	Grade	Metal
(t)	(g/t Au)	(oz Au)
777,000	6.73	168,000
1,601,000	8.66	446,000
+839,000	+1.91	+281,000
+108%	+28%	+167%

3.0 g/t Au	July 2019	1,906,000	6.67	409,000
	March 2023	2,118,000	8.46	576,000
	Increase	+212,000	+1.79	+167,000
		+11%	+27%	+41%

1,500,000	5.29	255,000
3,668,000	5.79	683,000
+2,168,000	+0.51	+428,000
+144%	+10%	+168%

Notes to the Mineral Resources

- CIM (2014) definitions were followed for Mineral Resources.
- Mineral Resources are reported above a cut-off grade of 4.5 g/t Au based on a C\$230/t operating cost.
- Mineral Resources are estimated using a long-term gold price of US\$1,600/oz Au, a US\$/C\$ exchange rate of 1:1.25, and a metallurgical recovery of 85%.
- Wireframes were modelled at a minimum width of 1.2 m.
- Bulk density varies by deposit and lithology and ranges from 2.00 t/m³ to 2.82 t/m³.
- Mineral Resources that are not Mineral Reserves do not have demonstrated economic viability. The estimate of mineral resources may be materially affected by environmental, permitting, legal, title, socio-political, marketing, or other relevant issues including risks set forth in Radisson's Annual Information Form for the year ended December 31, 2023 and other filings made with Canadian securities regulatory authorities and available at www.sedar.com.
- Numbers may not add due to rounding.

Notes on Historical Disclosure of Mineral Resources at the O'Brien Gold Project

- Evans, L., 2023, NI 43-101 Technical Report on the O'Brien Project, Northwestern Québec, Canada
- Williamson, K., 2019, NI 43-101 Technical Report and Mineral Resource Estimate for the O'Brien Project,
- Beausoleil, C., 2018, NI 43-101 Technical Report and Mineral Resource Estimate for the O'Brien Project, Abitibi, Québec, prepared for Radisson Mining Resources Inc. by InnovExplo, May 3, 2018.
- Richard, P., Turcotte, B., Carrier, A., 2015, Technical Report for the O'Brien Project, Abitibi, Quebec, prepared by InnovExplo for Radisson Mining Resources Inc., June 3, 2015.

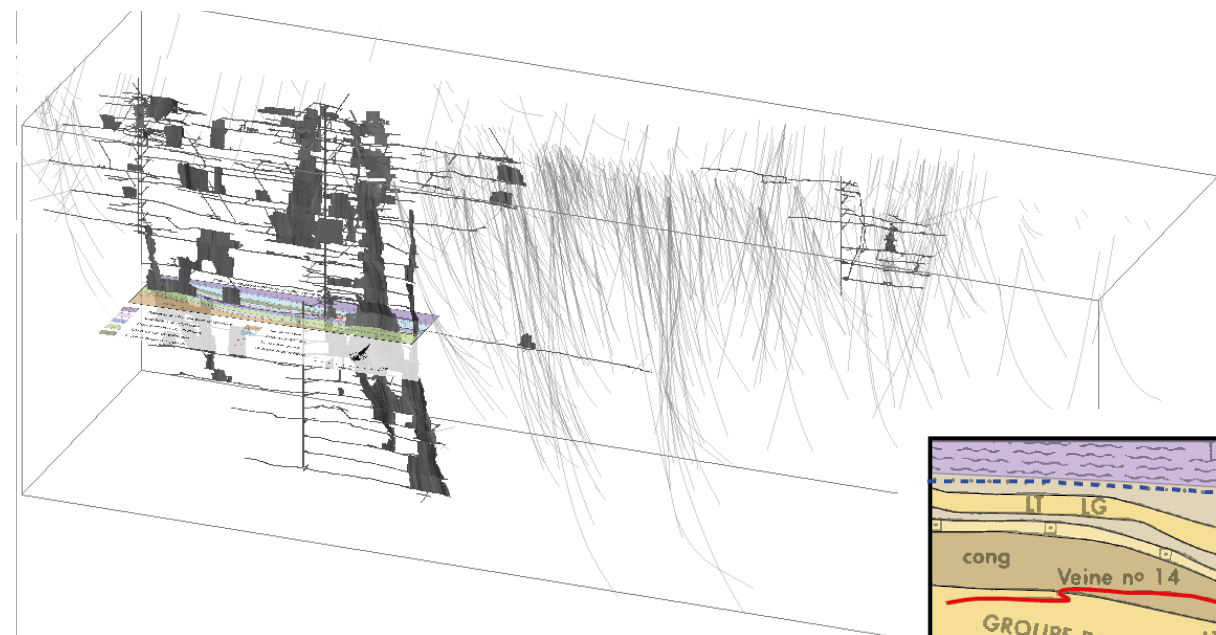
Cut-off Grade	Indicated Mineral Resources		
	Tonnage	Grade	Metal
	(t)	(g/t Au)	(oz Au)
6.0 g/t Au	1,012,000	12.80	417,000
5.0 g/t Au	1,313,000	11.12	470,000
4.5 g/t Au	1,517,000	10.26	501,000
4.0 g/t Au	1,770,000	9.40	535,000
3.5 g/t Au	2,065,000	8.59	571,000
3.0 g/t Au	2,118,000	8.46	576,000

Inferred Mineral Resources		
Tonnage	Grade	Metal
(t)	(g/t Au)	(oz Au)
945,000	11.12	338,000
1,334,000	9.46	406,000
1,601,000	8.66	446,000
2,007,000	7.78	502,000
2,522,000	6.96	564,000
3,668,000	5.79	683,000

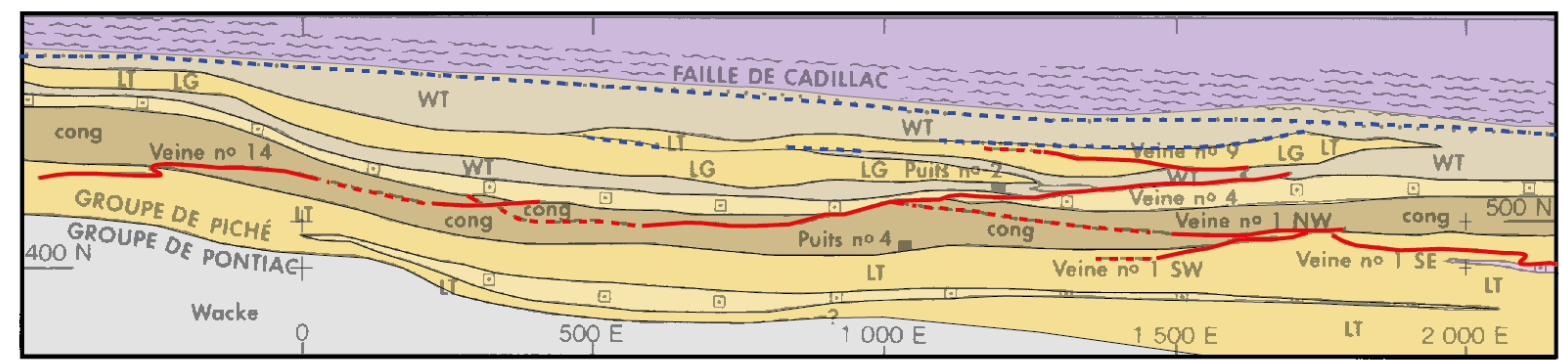
Notes to the Mineral Resources

1. CIM (2014) definitions were followed for Mineral Resources.
2. Mineral Resources are reported above a cut-off grade of 4.5 g/t Au based on a C\$230/t operating cost.
3. Mineral Resources are estimated using a long-term gold price of US\$1,600/oz Au, a US\$/C\$ exchange rate of 1:1.25, and a metallurgical recovery of 85%.
4. Wireframes were modelled at a minimum width of 1.2 m.
5. Bulk density varies by deposit and lithology and ranges from 2.00 t/m³ to 2.82 t/m³.
6. Mineral Resources that are not Mineral Reserves do not have demonstrated economic viability. The estimate of mineral resources may be materially affected by environmental, permitting, legal, title, socio-political, marketing, or other relevant issues including risks set forth in Radisson's Annual Information Form for the year ended December 31, 2023 and other filings made with Canadian securities regulatory authorities and available at www.sedar.com.
7. Numbers may not add due to rounding.

WELL UNDERSTOOD GEOLOGY (1)

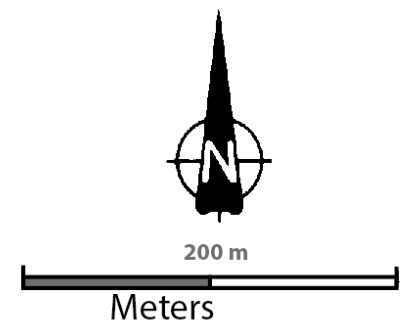


- Veins modelling is one of the most important parts of the O'Brien Mineral Resource Estimate
- We know what has been mined in the past at the Old O'Brien Mine



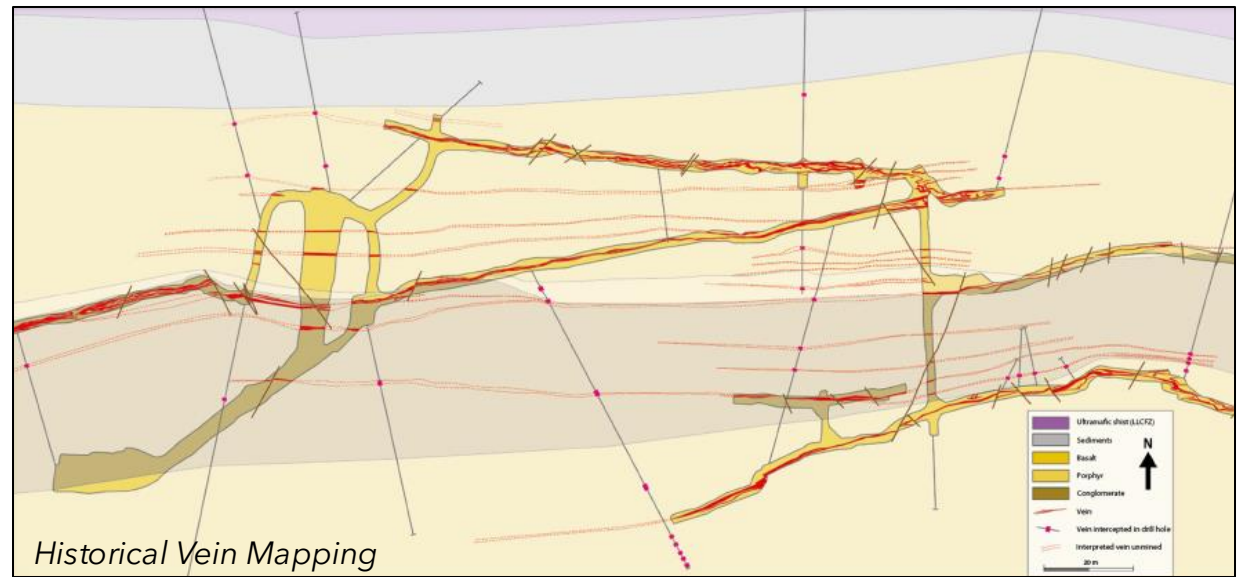
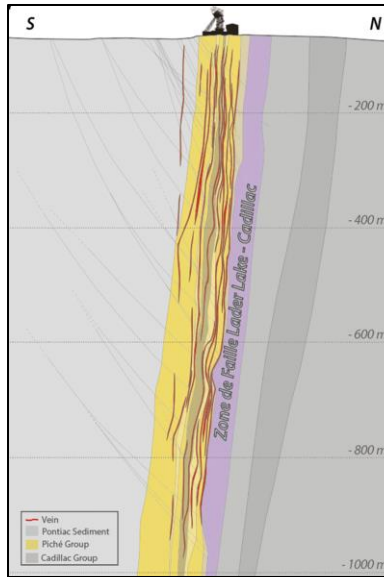
- All the galleries have been mapped and we understand very well the vein behaviour in relation to the stratigraphy of the geological units
- At large-scale the veins are continuous, sub-parallel to the stratigraphy and show slight orientation variations within the same stratigraphic unit.

	Chlorite-talc carbonate schist		Greywacke
	Porphyric andesite		Greywacke & Tuff
	O'Brien conglomerate		Quartz Vein
	Tholeiitic tuff and lava flow		Graphitic schist
	Coarse basaltic lava flow		

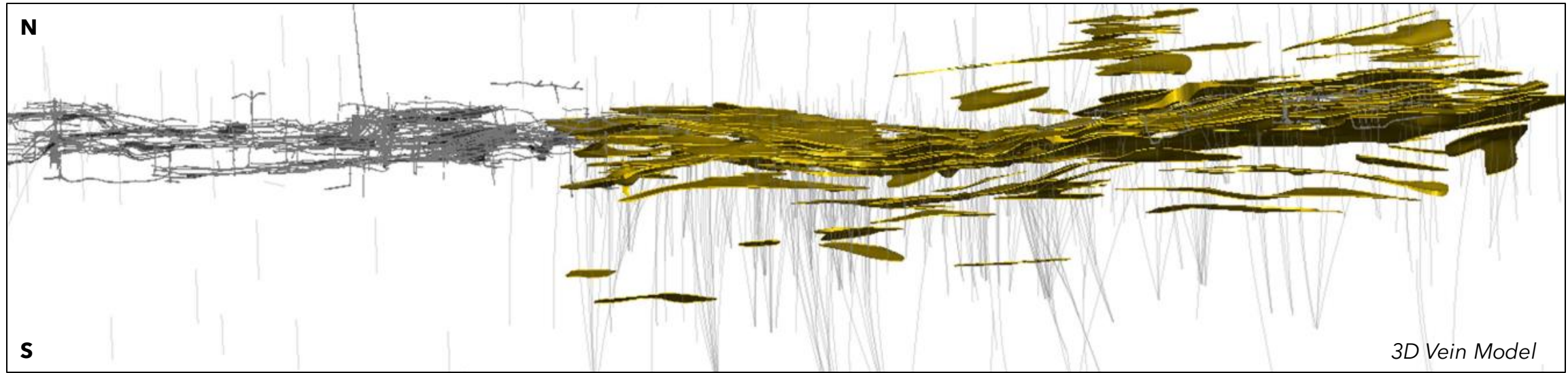


WELL UNDERSTOOD GEOLOGY (2)

- A Vein Model has been created with at least 134 Mineralized Zones
- The model is dynamic and adjusted based on ongoing drilling
- The model respects vein geometries and relationships shown in the historically mined veins
- The model represents domains used to restrict the 2023 MRE

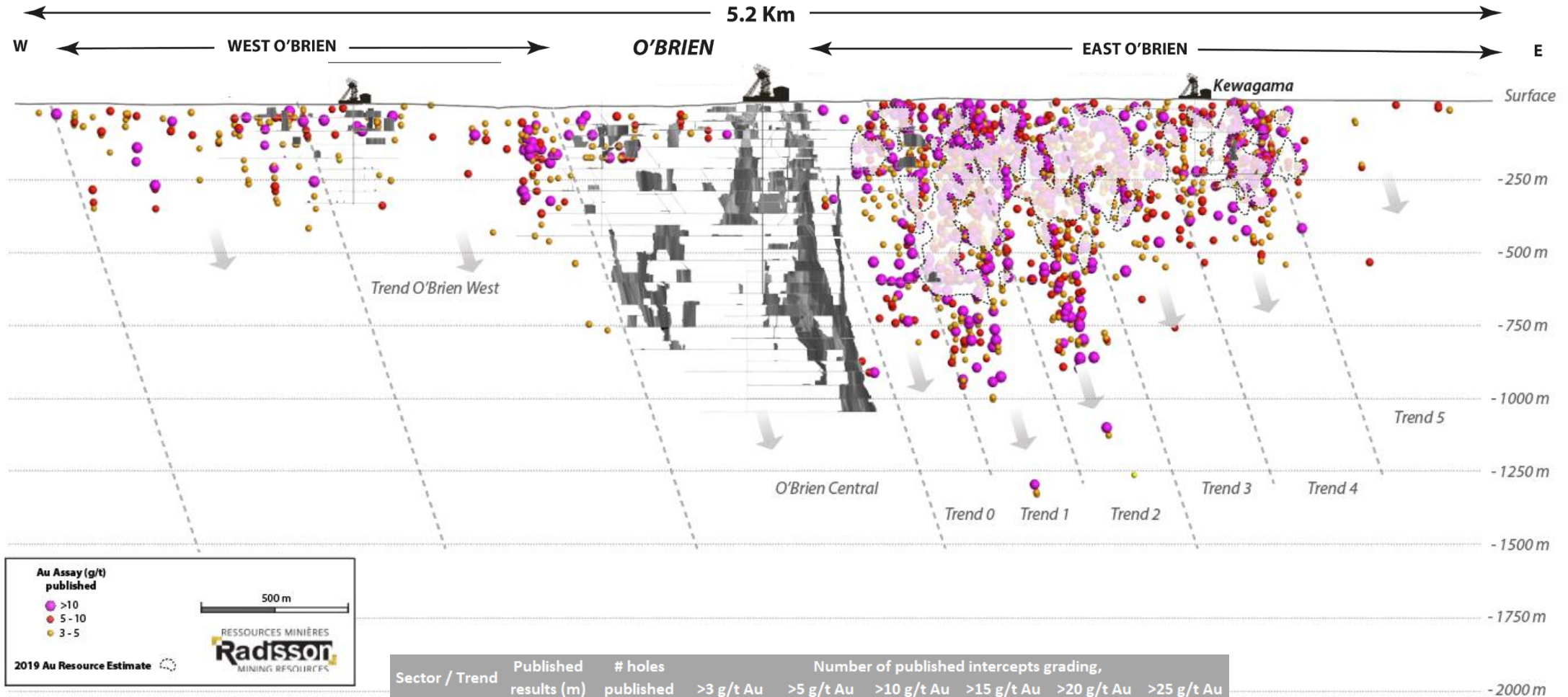


Historical Vein Mapping



3D Vein Model

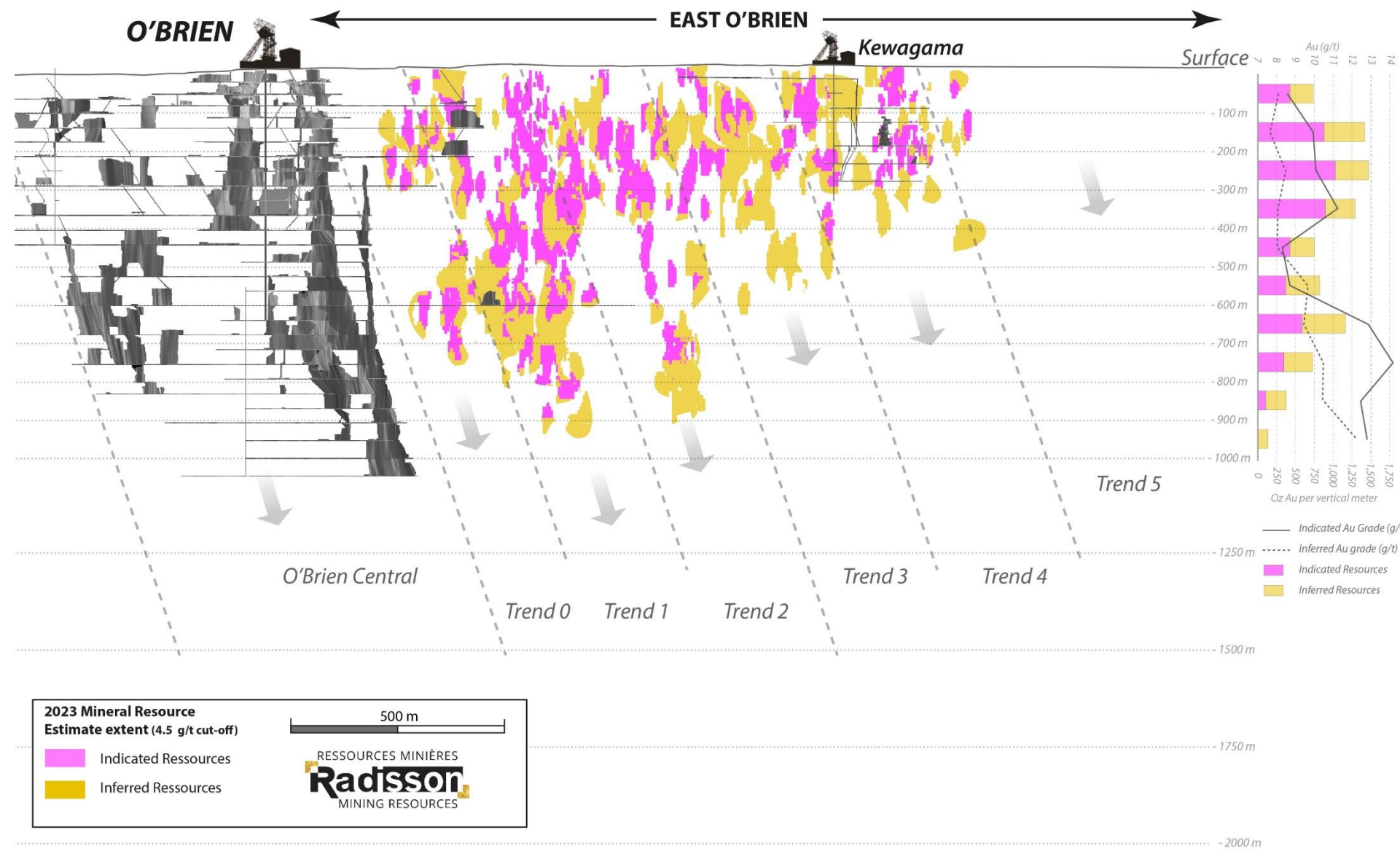
127,600 METRES DRILLED BETWEEN 2019 & 2023



Sector / Trend	Published results (m)	# holes published	Number of published intercepts grading,					
			>3 g/t Au	>5 g/t Au	>10 g/t Au	>15 g/t Au	>20 g/t Au	>25 g/t Au
O'Brien West	5,700	11	5	3	1	1	1	1
Trend #0	18,200	37	27	17	8	4	4	4
Trend #1	42,200	77	74	60	27	15	8	7
Trend #2	33,200	61	57	45	19	11	7	4
Trend #3	16,200	40	30	20	11	6	3	1
Trend #4	8,500	19	11	8	2	1	1	1
Trend #5	3,600	11	4	4	2	1	1	1
Total	127,600	256	208	157	70	39	25	19

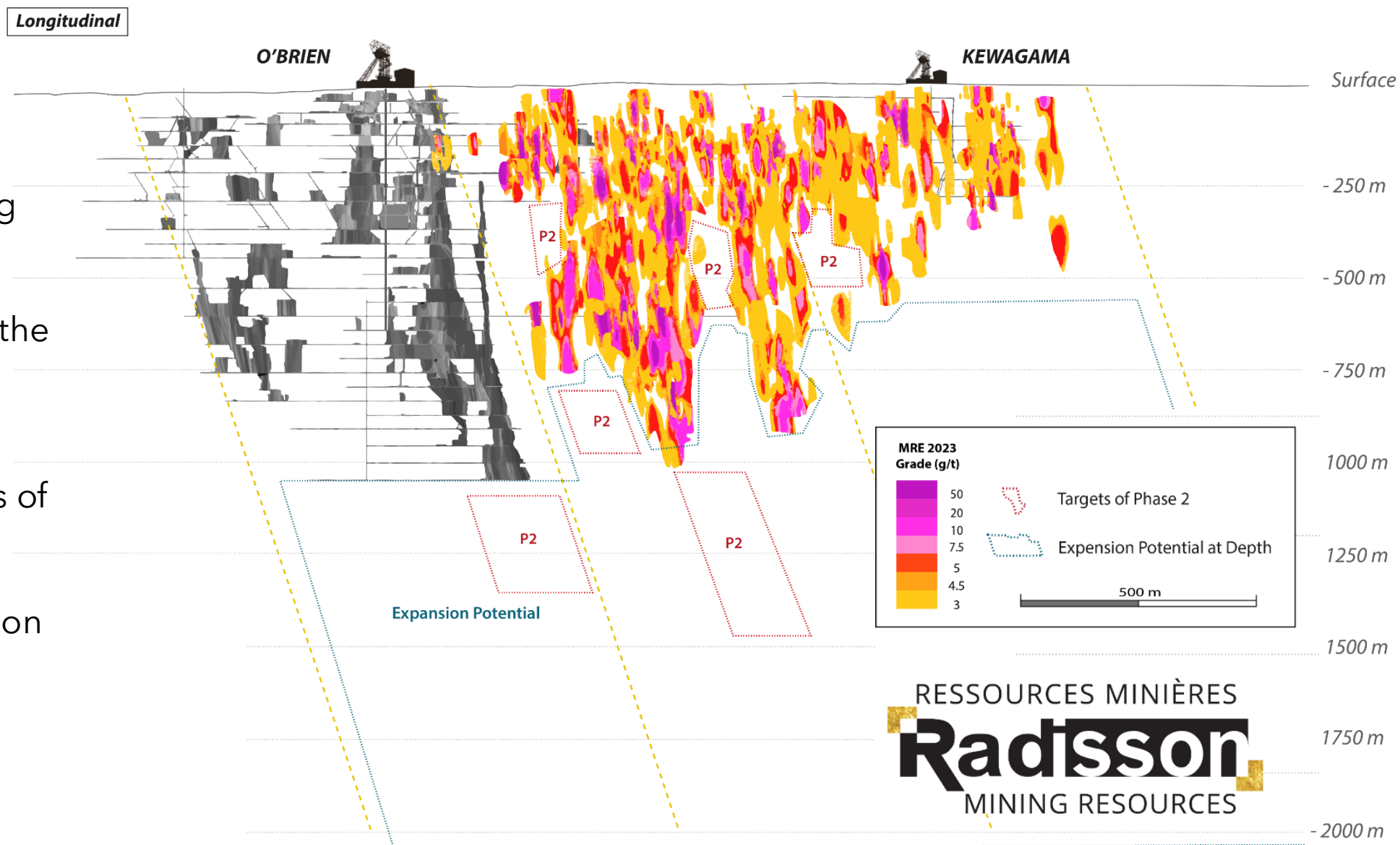
2023 MRE – BREAKDOWN OF INDICATED/INFERRED

- Distribution of Indicated/Inferred Resources driven primarily by **drill density**
- **Higher ounces per vertical meter** at shallower depths with more drilling

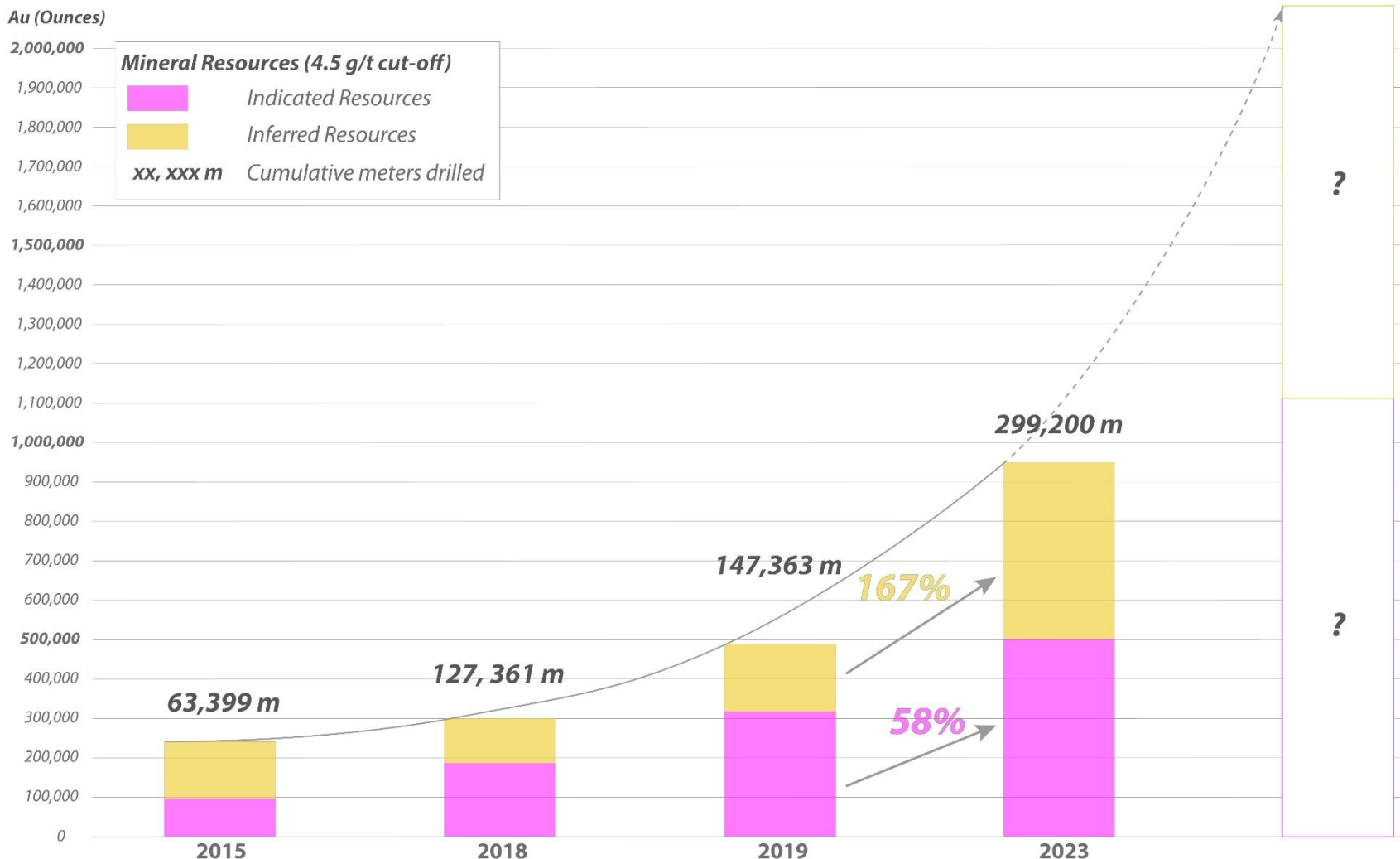


2023 MRE – BREAKDOWN OF GRADE

- **2 rigs** in the second phase of 2024 drilling **currently targeting:**
 1. Shallower gaps in the existing resource model
 2. Deeper extensions of high-grade trends
- Reasonable exploration opportunities to 2km depth



STEADY GROWTH IN MINERAL RESOURCES



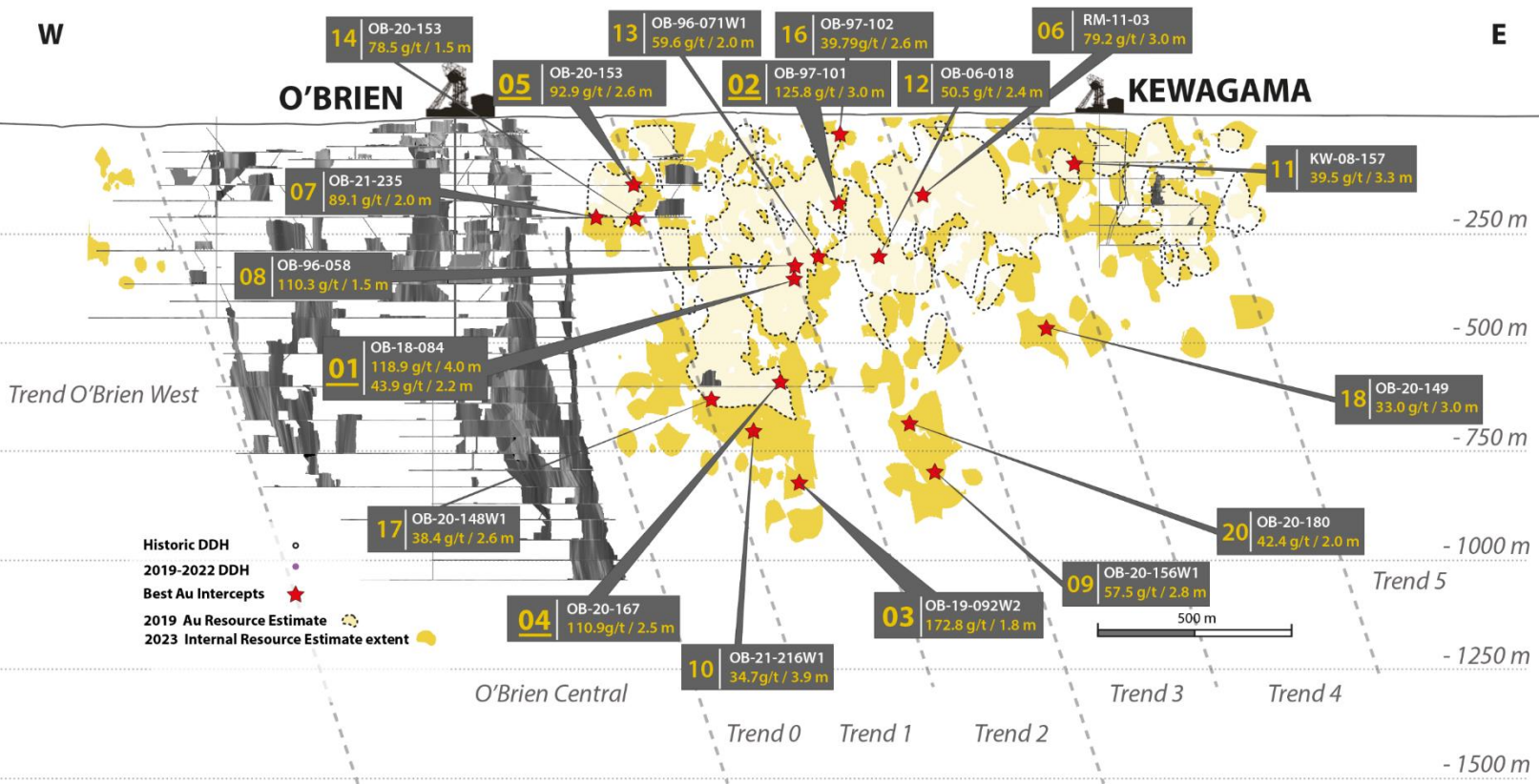
Notes to the Mineral Resources

1. CIM (2014) definitions were followed for Mineral Resources.
2. Mineral Resources are reported above a cut-off grade of 4.5 g/t Au based on a C\$230/t operating cost.
3. Mineral Resources are estimated using a long-term gold price of US\$1,600/oz Au, a US\$/C\$ exchange rate of 1:1.25, and a metallurgical recovery of 85%.
4. Wireframes were modelled at a minimum width of 1.2 m.
5. Bulk density varies by deposit and lithology and ranges from 2.00 t/m³ to 2.82 t/m³.
6. Mineral Resources that are not Mineral Reserves do not have demonstrated economic viability. The estimate of mineral resources may be materially affected by environmental, permitting, legal, title, socio-political, marketing, or other relevant issues including risks set forth in Radisson's Annual Information Form for the year ended December 31, 2023 and other filings made with Canadian securities regulatory authorities and available at www.sedar.com.
7. Numbers may not add due to rounding.

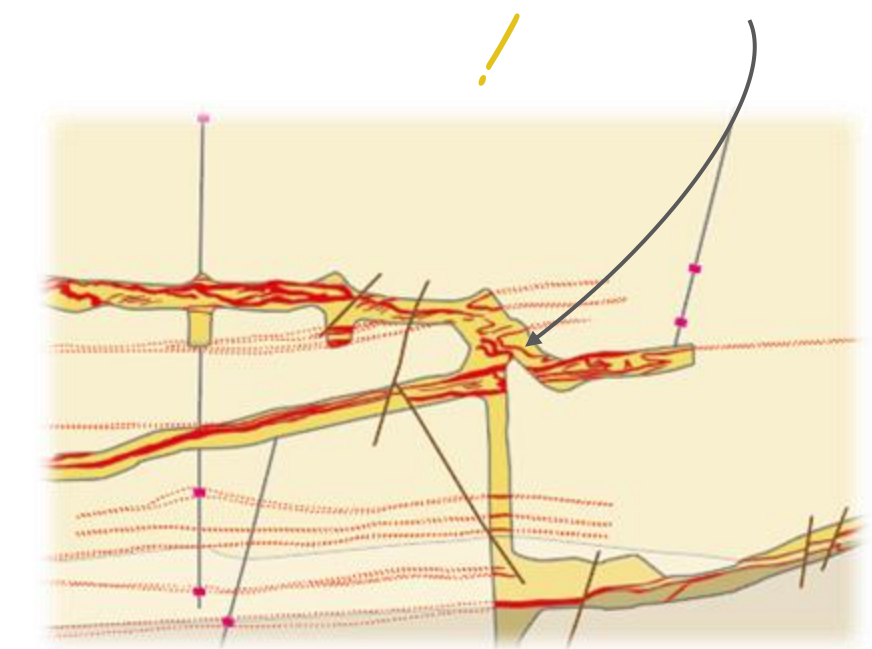
Notes on Historical Disclosure of Mineral Resources at the O'Brien Gold Project

1. Evans, L., 2023, NI 43-101 Technical Report on the O'Brien Project, Northwestern Québec, Canada
2. Williamson, K., 2019, NI 43-101 Technical Report and Mineral Resource Estimate for the O'Brien Project, Abitibi, Québec, prepared for Radisson Mining Resources Inc. by InnovExplo, May 3, 2018.
3. Richard, P., Turcotte, B., Carrier, A., 2015, Technical Report for the O'Brien Project, Abitibi, Quebec, prepared by InnovExplo for Radisson Mining Resources Inc., June 3, 2015.

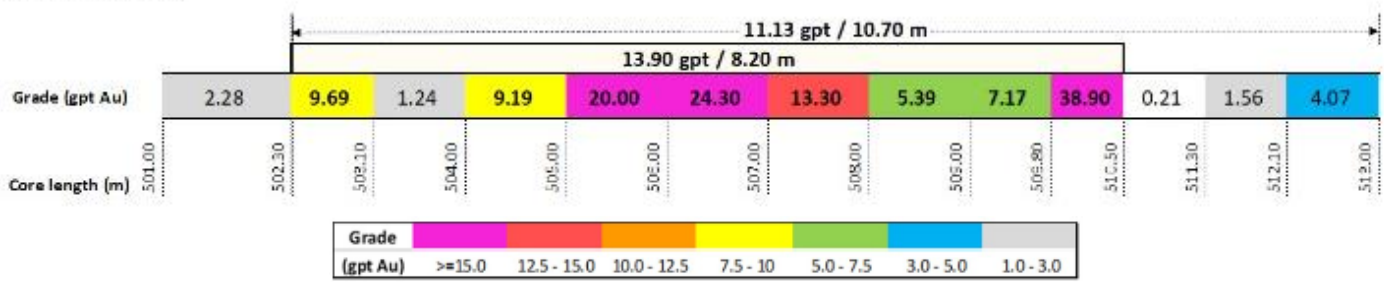
CONTINUITY OF MINERALIZATION AND GRADE



*Veins can be thick such as
8 m of continuous high grade*



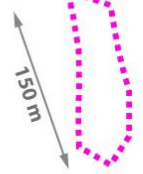
OB-21-201



OPEN AREAS TARGETED FOR RESOURCE EXPANSION

Hole ID	Au (g/t)	Core Length (m)
OB-23-284	81.83	3.00
OB-23-283	9.06	2.00
OB-23-283	5.17	4.40

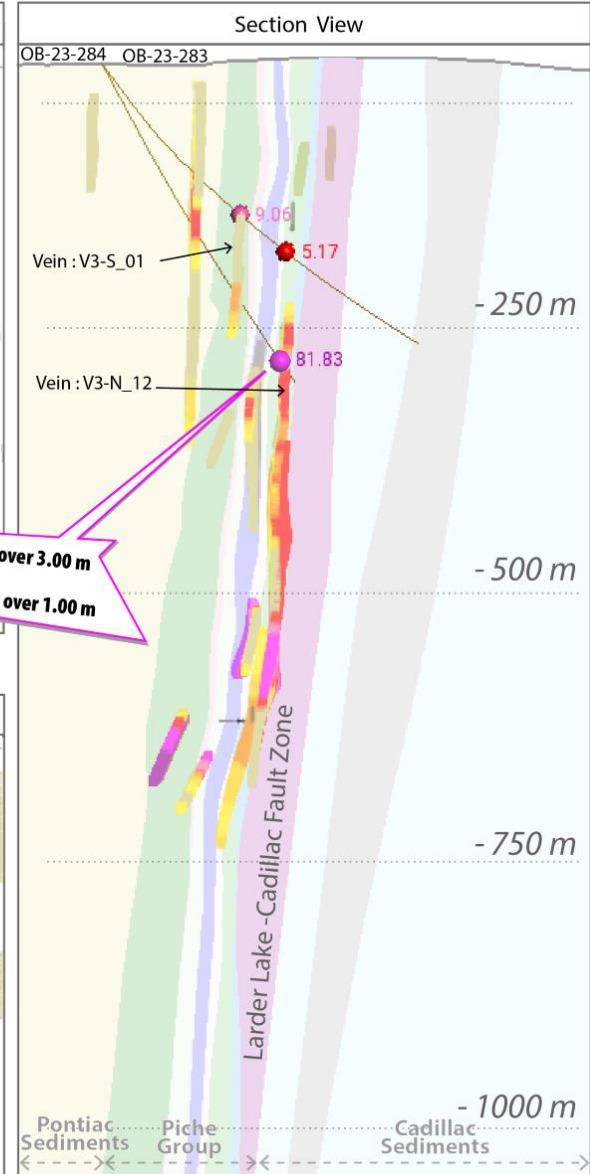
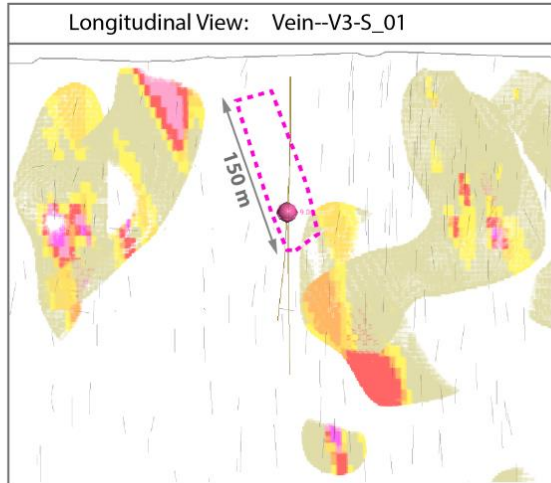
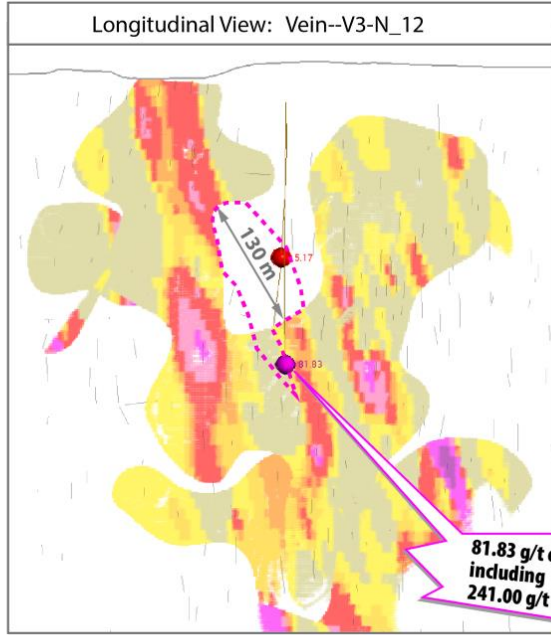
Targeted area for high-grade resource growth



Au Assay (g/t)

- >10
- 5 - 10
- 3 - 5
- 2 - 3

Mineral Resource Estimate



Visible gold in OB-23-284

EXPLORATION UPSIDE IN THE PONTIAC SEDIMENTS (1)

Gold in Drilling within Pontiac Sediments when Targeting Main High-Grade Deposit

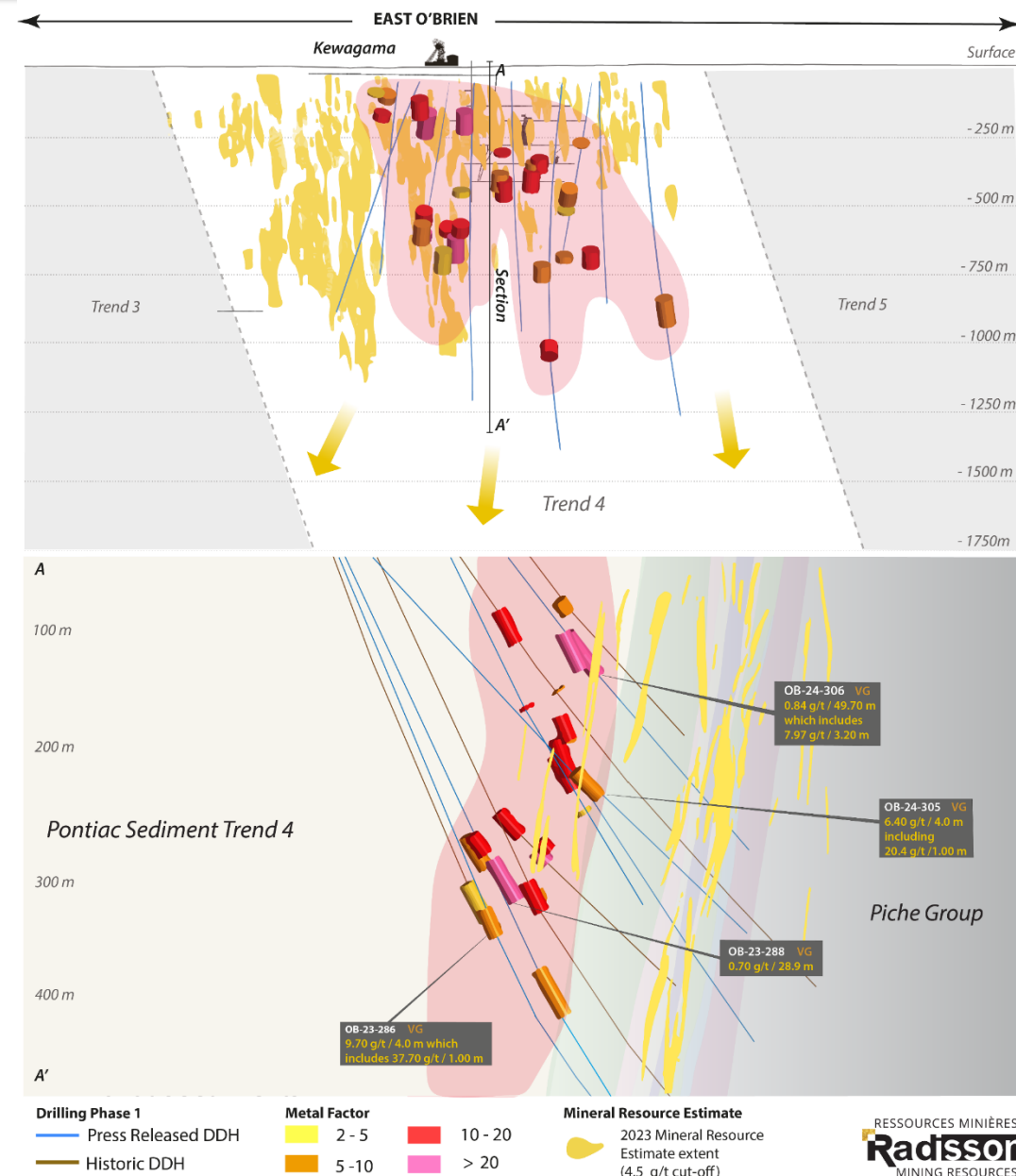
2024 - Key Bulk Intersection Highlights

- OB-24-306 intersected 0.84 g/t Au over 49.70 m, including 3.97 g/t Au over 8.20 m
- OB 23-288 intersected 0.70 g/t Au over 28.90 m, including 3.96g/t Au over 4.50 m

Historical holes - Key Bulk Intersection Highlights

- RM-11-01 intersected 1.21 g/t Au over 39.50 m
- OB-21-228 intersected 1.08 g/t Au over 37.10 m
- OB-21-229 intersected 1.04 g/t Au over 24.80 m

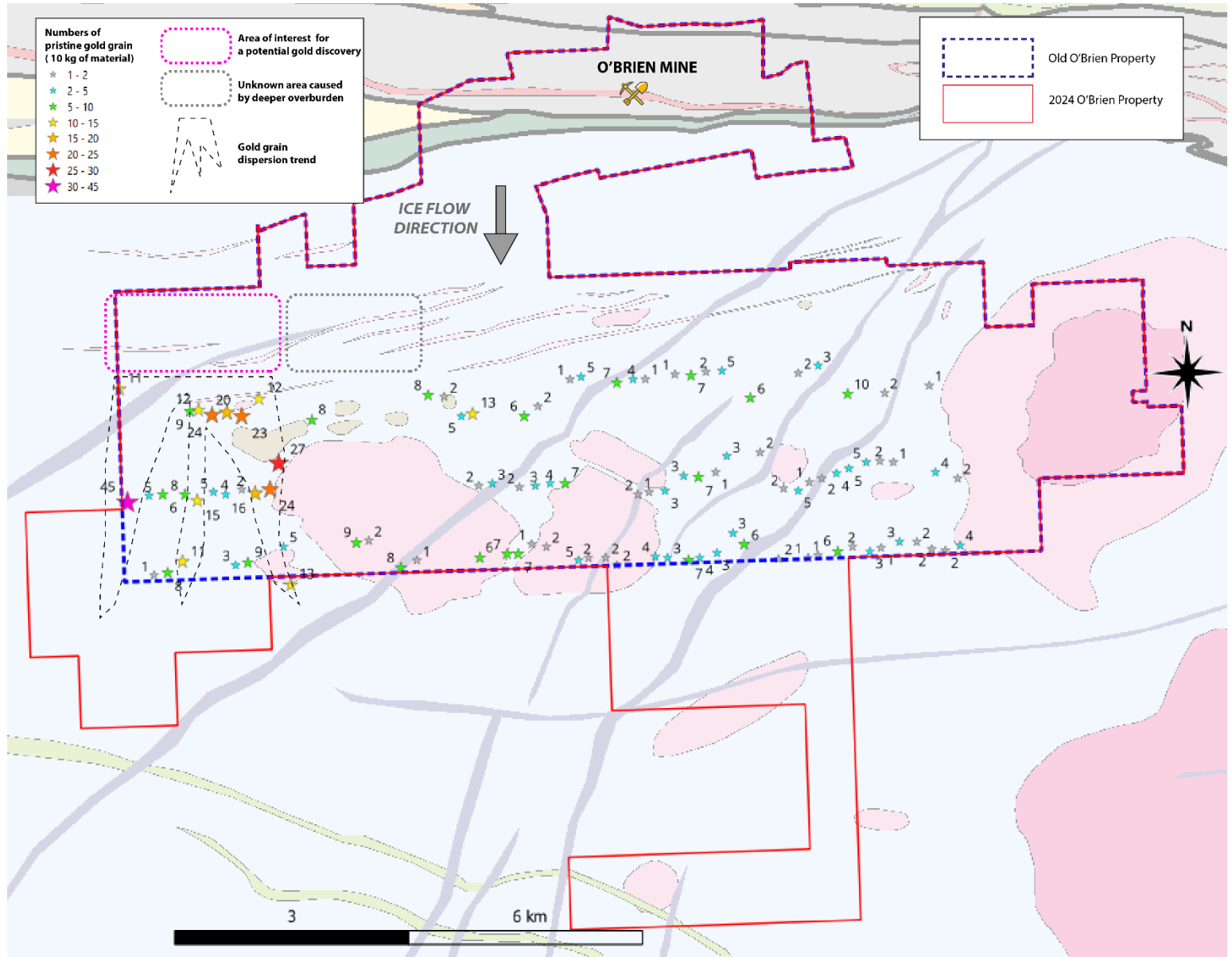
Assays pending from 12 additional intervals



EXPLORATION UPSIDE IN THE PONTIAC SEDIMENTS (2)

Gold in Till Samples over Pontiac Sediments in New Alger Property

- Brand new target area with more than 2km strike length with potential for gold discovery identified
- 115 glacial till surface samples collected and analyzed
- 14 anomalous samples forming gold rain tail
- 15.5km² of additional claims staked expanding property to 74.3km²





Matt Manson

President, CEO & Director
mmanson@radissonmining.com

Hubert Parent-Bouchard

Chief Financial Officer
hpbouchard@radissonmining.com

Kristina Pillon

Manager, Investor Relations
kpillon@radissonmining.com

Radisson Mining Resources Inc.

50 rue du Petit-Canada
Rouyn-Noranda, Qc J0Y 1C0
www.radissonmining.com

Investor Inquiries: 604.908.1695

